



VICTORIAN  
**NATIONAL PARKS**  
ASSOCIATION

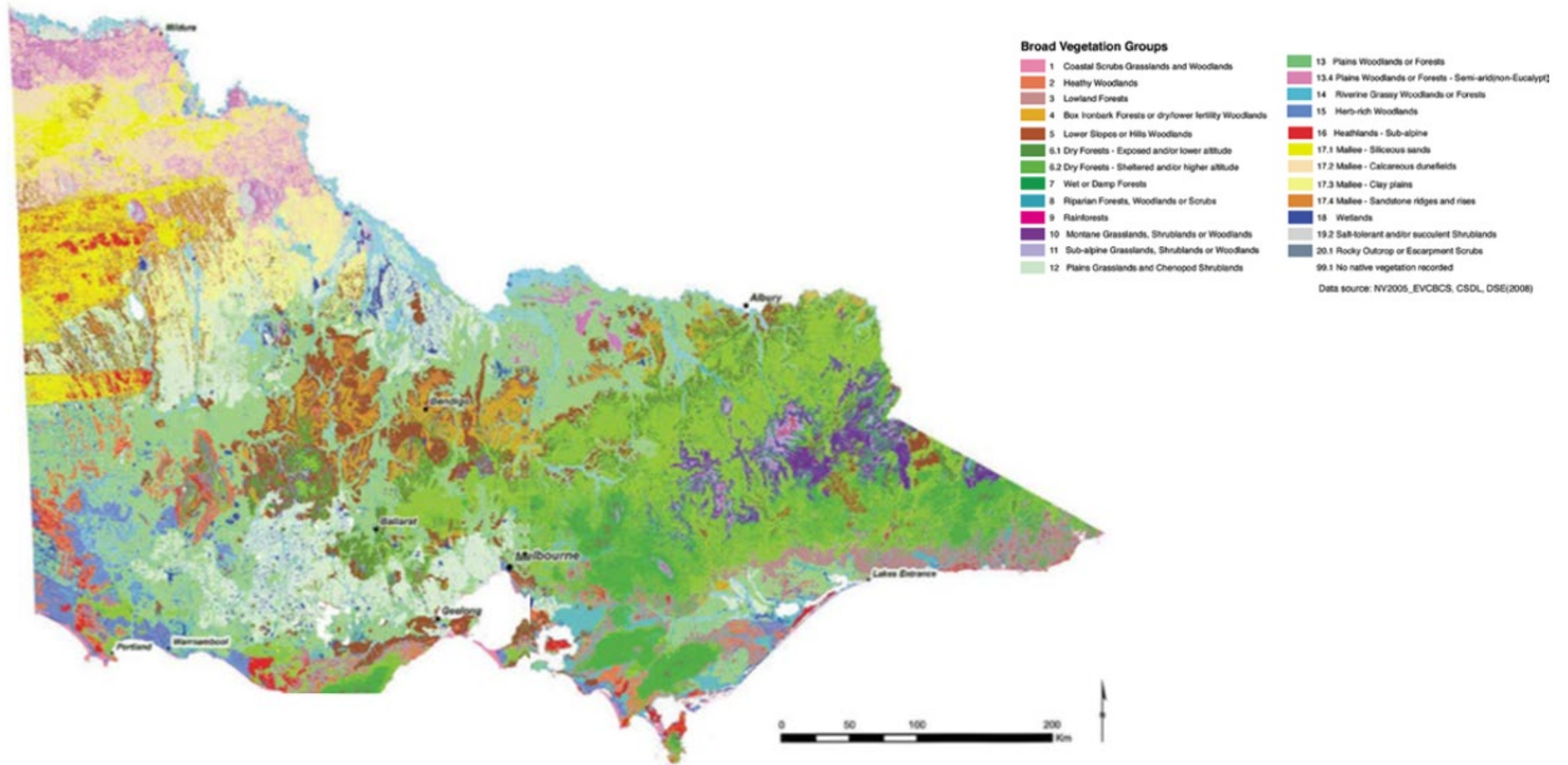
*Be part of nature*

# VNPA VISION & MISSION

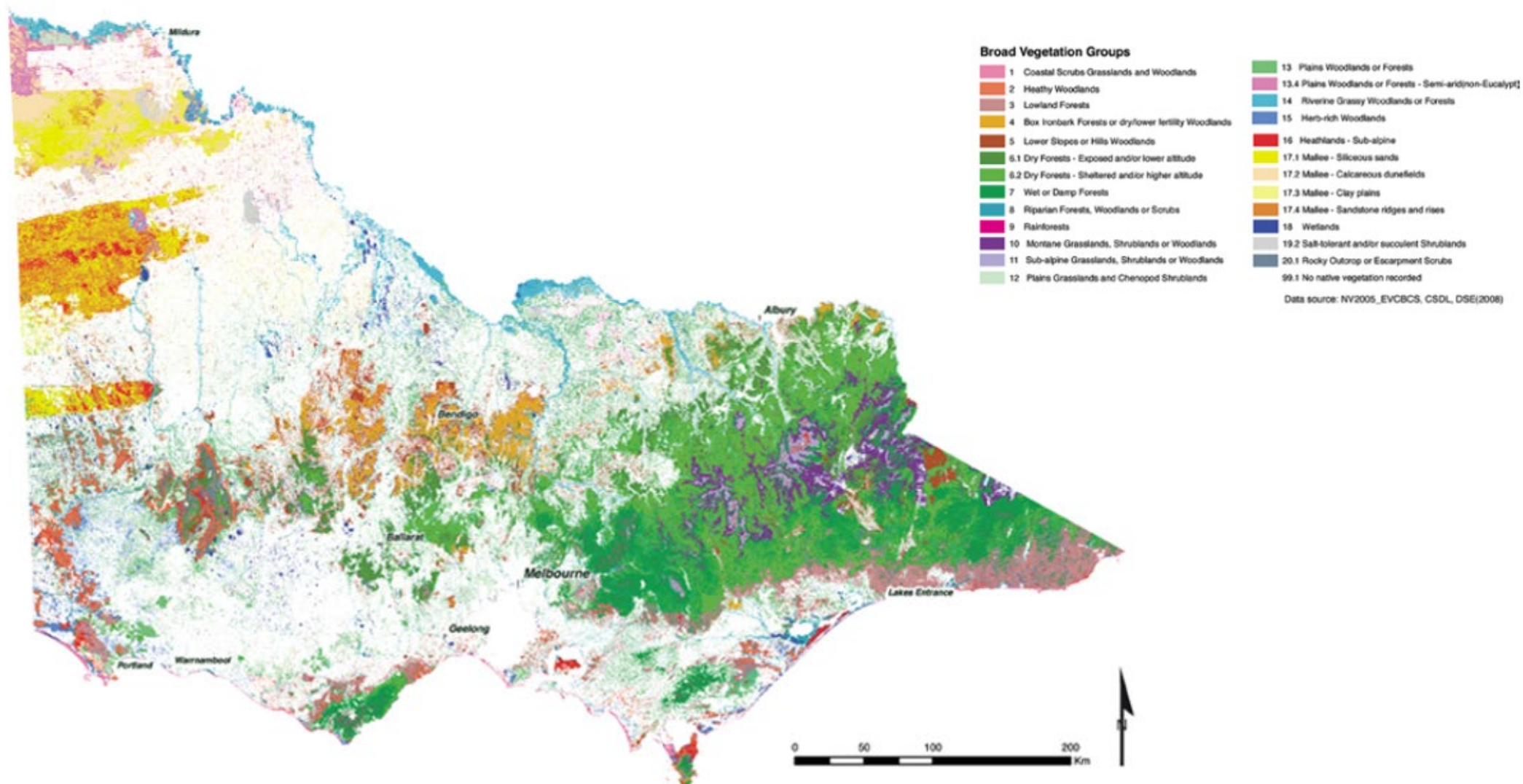
- Victoria is a place with a diverse and healthy natural environment that is protected, respected and enjoyed by all.
- VNPA is an independent, not-for-profit, non-party-political, supporter and membership-based group



# Distribution of habitat (EVCs) in Victoria prior to 1750



# Distribution of habitat (EVCs) in Victoria



# Victoria's threatened species

- **There are 2030 recognized threatened species in Victoria**
- **~85% of Victoria's threatened species were assessed as endangered or critically endangered**

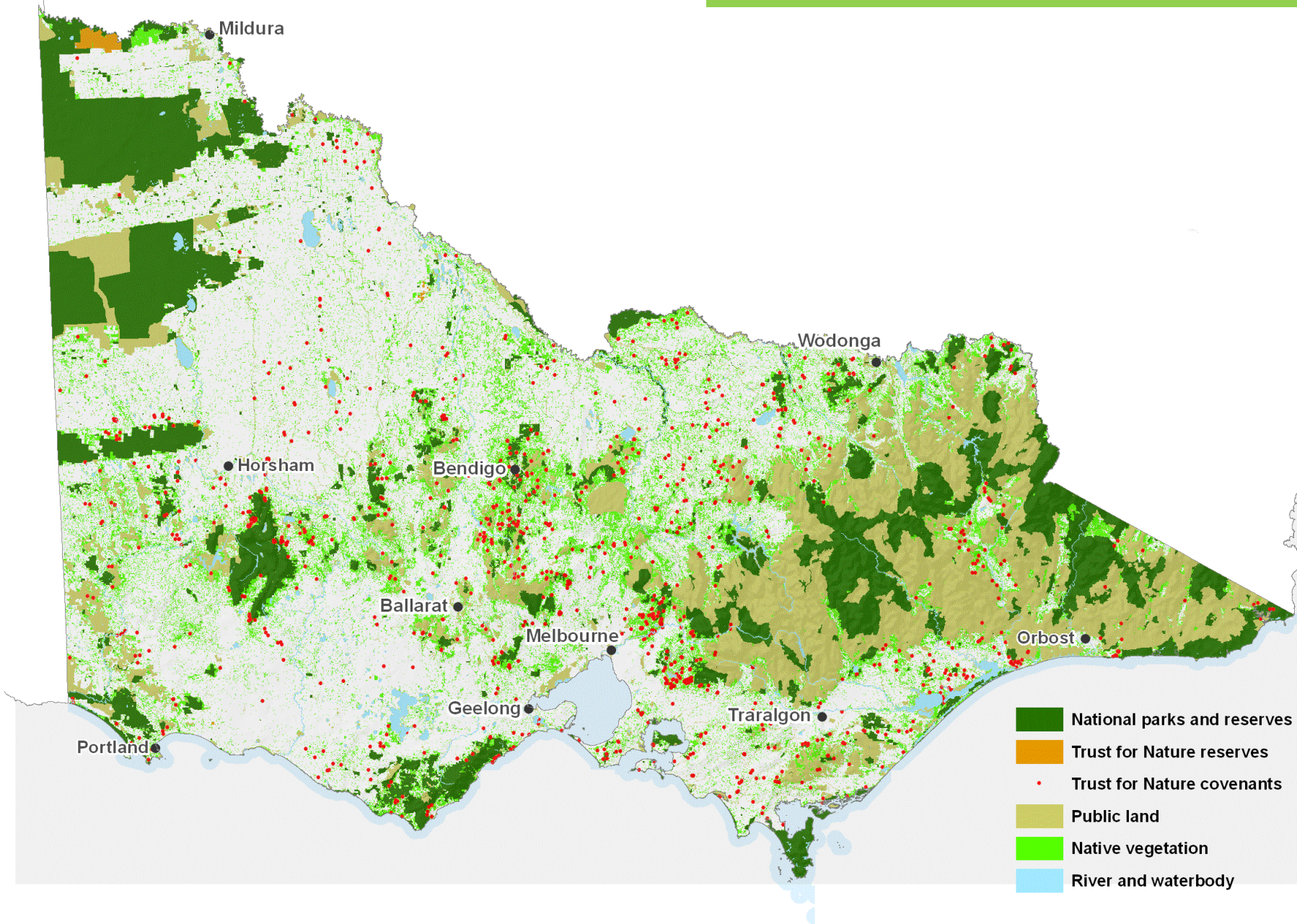
Threatened species in Victoria	
Mammals	51
Birds	102
Fish	34
Amphibians	15
Reptiles	40
Insects	56
Crayfish, yabbies, shrimp	28
Other invertebrates	37
Flowering plants	1548
Ferns and allies	51
Bryophytes	60
Fungi	6
Lichens	2
<b>TOTAL</b>	<b>2030</b>

# Drivers of ecosystem decline in Victoria

- Habitat loss and fragmentation
- Invasive species
- Frequent fire
- Altered water regimes
- Logging and habitat degradation
- A warming climate



## Parks and conservation areas + other types of protected areas



### National Parks & Conservation Reserves

- Approx. 4 million ha.
- Approx. 18 % of the state
- Approx. 45% of public land
- 5% of state waters

### Other Protected Areas

- Large reserves like Neds Corner
- Approx. 100,000 ha of Trust for Nature (TFN) Convents on private land
- Indigenous Protected Areas

# The Value of National Parks

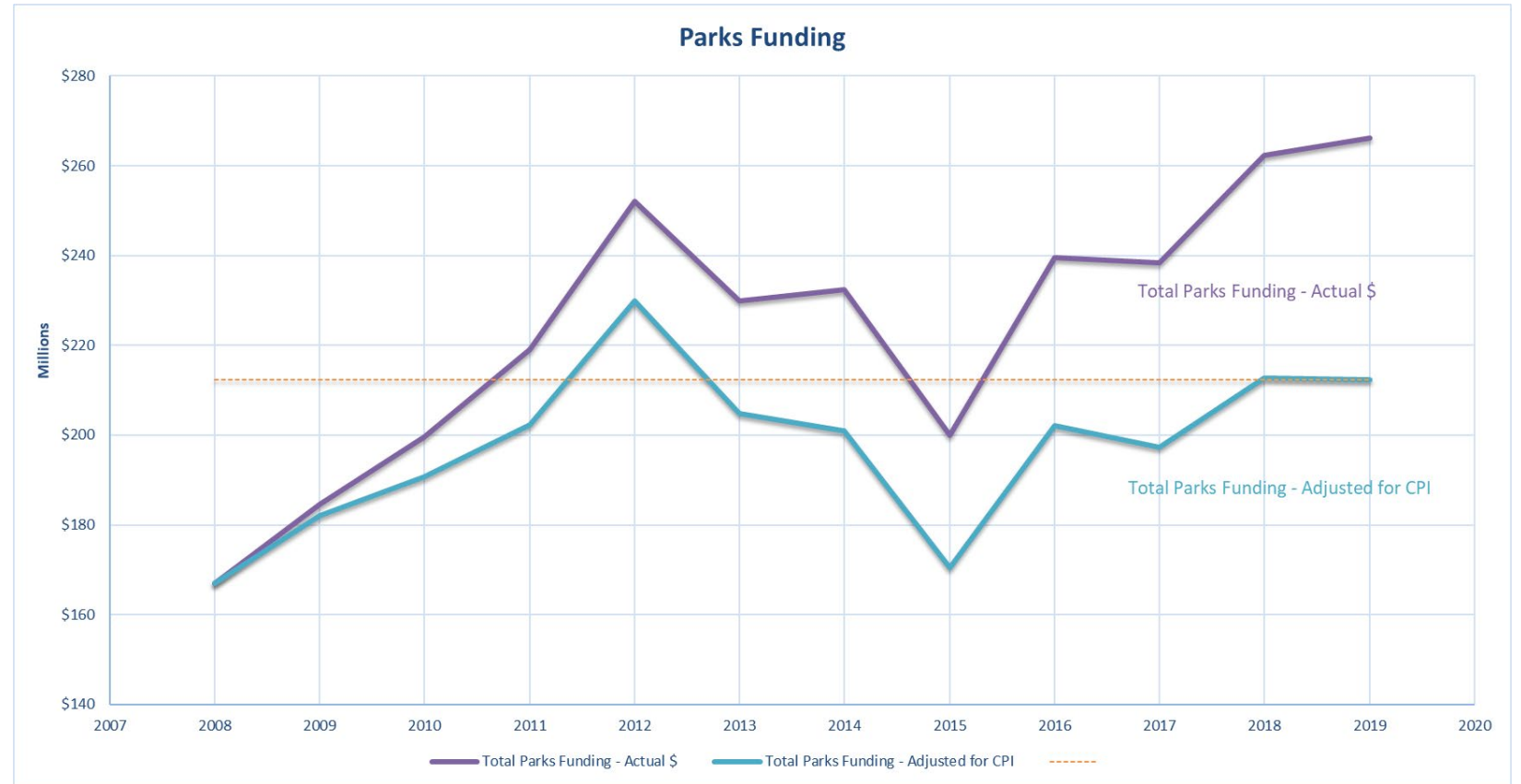
- National parks protect whole ecosystems & habitats. Terrestrial biodiversity values are highest on public land, of which 70% has the highest biodiversity values. 40% of highest values are in parks and conservation areas.
- Empirically, strict protected areas such as national parks are one of the few strategies which have been shown to slow decline of threatened species.
- Provide low cost respite and recreation to millions of Victorian's – **96 million visits per annum** to Park Victoria managed areas. **50 million visits to national parks per annum.**
- Contribute at least **\$ 2.1 billion per annum to the Victorian economy** from visits to terrestrial and marine parks, piers, and beaches. Parks supports at least 42, 000 regional & metropolitan jobs.
- Vic Government estimates that the gap in additional protected areas required to meet Australia's criteria for a comprehensive, adequate and representative reserve system is **2.1 million hectares**
- **No major new parks for over decade, and a decision on central west parks is over 12 months overdue**



# Reversing ecosystem decline

- **Increased parks funding** is needed for core ecological **management** & habitat **restoration**

Parks Victoria Funding 2008 - 2019 ('000,000)

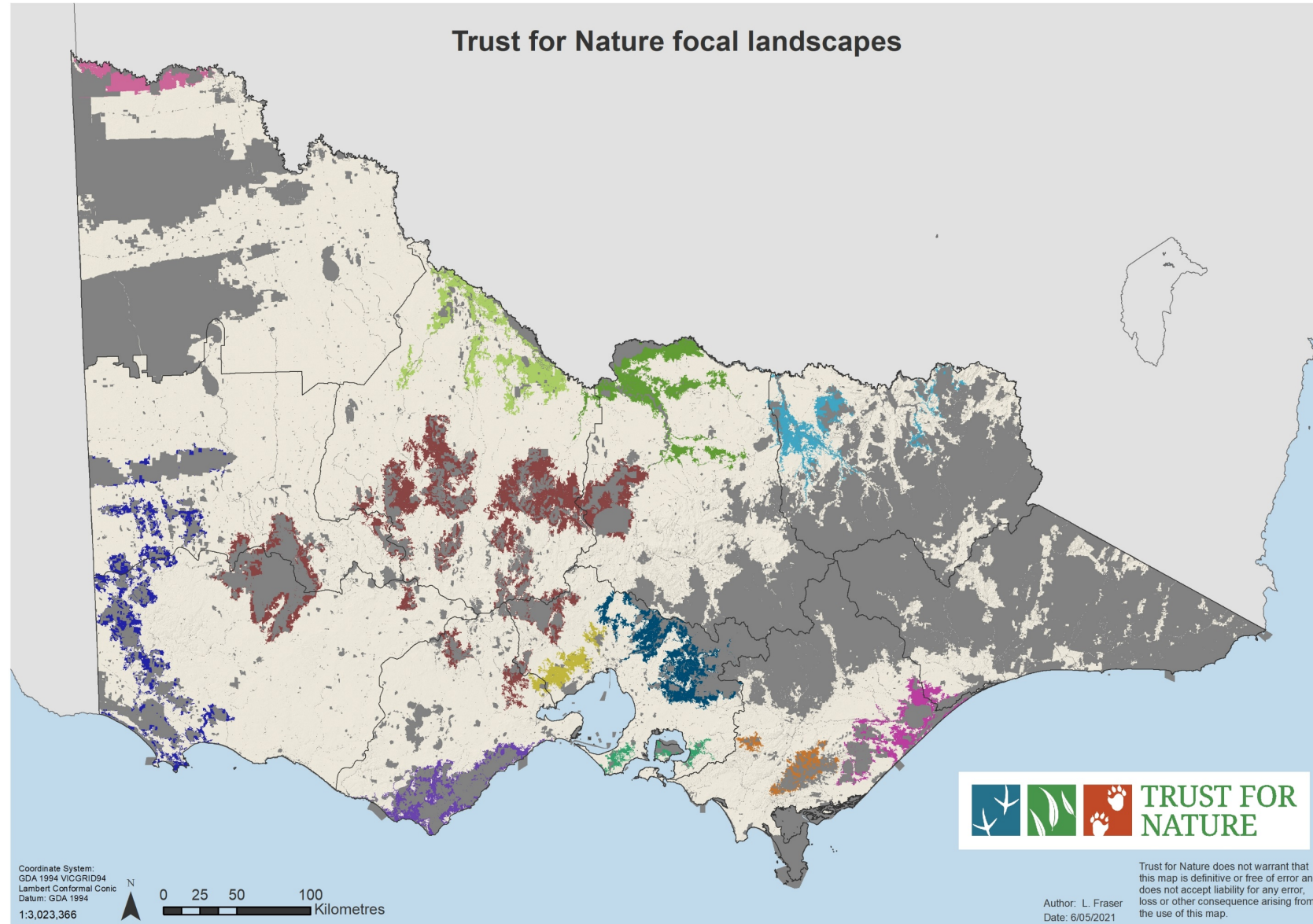


Roughly 0.5 % of state expenditure

Should be at least 1% of state expenditure

# Reversing ecosystem decline (cont'd)

- Highly cleared and fragmented regions often have a high proportion of remnant native vegetation on private land
- Conservation covenants are a partnership & voluntary
- **Private land conservation** can be supported through an increased revolving fund e.g. \$10-\$20 million (one off) investment, for Trust for Nature to buy, protect and sell on properties.



# Reversing ecosystem decline:

The VNPA has compiled a 100+ page submission which provides detailed discussion on what can be done.

These include practical recommendations for:

- **More resources for ecological management, monitoring & restoration** (to increase ecosystem resilience to threatening processes such as invasive species, habitat fragmentation, altered fire and water regimes, and climatic changes)
- **Stronger laws and better enforcement** (to better protect threatened species and their habitats, and to implement the *Flora and Fauna Guarantee Act 1988* and other legislation and rules)
- **Completing the formal reserve system** (to 'fill the gaps' in the reserve system to ensure a comprehensive, adequate and representative network of protected areas for Victoria's threatened species and their habitats, both private & public)
- **Better planning and delivery** (plan early, plan at ecosystem scale, think about the impacts of threatening processes and climate change early)

# THANK YOU



Photo: Sandy Scheltema

© Scheltema

Thank you for inviting us.

We look forward to your questions.



**VICTORIAN  
NATIONAL PARKS  
ASSOCIATION**  
*Be part of nature*