

PAEC presentation – Health Infrastructure

The Hon Mary-Anne Thomas MP
Minister for Health Infrastructure

Key achievements from 2022-23

- 20* projects completed, including Australia's first Heart Hospital, a new state-of-the-art aged care facility in Wantirna and Wonthaggi Hospital Expansion (Stage 1)
- Significant progress on major projects across the state, including the award-winning new Footscray Hospital and mental health beds expansion program

The Victorian Heart Hospital complete



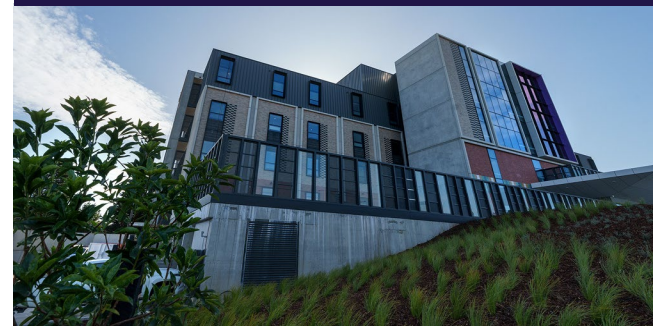
Wonthaggi Hospital expansion complete (Stage 1)



New Footscray Hospital surpasses half-way mark



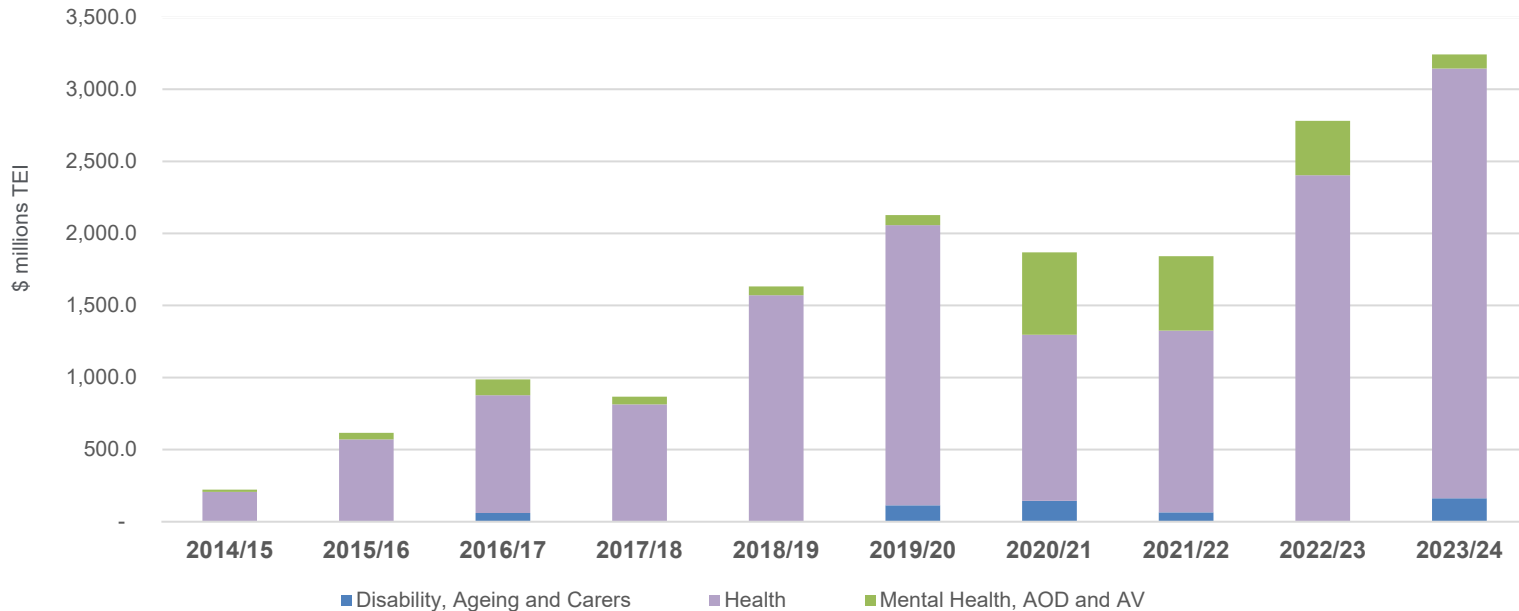
Wantirna residential aged care facility complete



* Includes delivery of programs with multiple individual projects such as grants programs

Decade of growth in health infrastructure investment

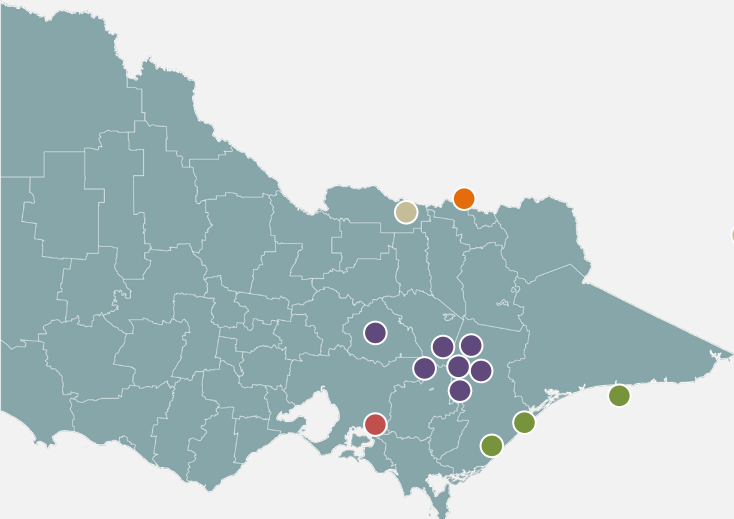
Infrastructure investment has grown from more than \$220 million to \$3.2 billion per year in a decade across all portfolios.



Delivering care closer to home

Victoria's health capital program is now managing more than \$15 billion in funded projects across the health, mental health, aged care and ambulance service portfolios.

Budget 23/24 highlights



Metro Melbourne

- Northern Hospital Expansion (Budget 23/24)
- Queen Elizabeth II Hospital redevelopment (Budget 23/24)
- Dandenong Hospital expansion (Budget 23/24)
- Monash Medical Centre Tower Expansion (Budget 23/24)
- Austin Hospital emergency department upgrade (Budget 23/24)
- Thomas Embling Hospital Redevelopment (Budget 23/24)
- Metropolitan Health Infrastructure Fund (Budget 23/24)
- Royal Melbourne Hospital & Royal Women's Hospital upgrades
- New Footscray Hospital
- Frankston Hospital redevelopment
- New and upgraded YPARCs

North West Victoria

- Cohuna District Hospital aged care upgrade (Budget 23/24)
- Swan Hill emergency department redevelopment
- Mildura Base Public Hospital theatre and medical equipment upgrades
- Mallee District Aboriginal Services expansion of Mental Health Hub
- Sunraysia Community Health Services upgrades

North East Victoria

- Numurkah Hospital campus aged care upgrade (Budget 23/24)
- Albury Wodonga Health Emergency Department expansion
- Albury Base Hospital redevelopment
- Shepparton Hospital redevelopment
- Shepparton Early Parenting Centre
- New Shepparton Youth Prevention & Recovery Care centre

More than 80 current projects in planning and delivery*

South West Victoria

- **Armstrong Creek ambulance station (Budget 23/24)**
- Warrambool Base Hospital redevelopment
- Colac Area Health upgrades
- Hamilton Community Health new community mental health facility
- Winda-Mara Aboriginal Corporation health service development
- Heywood Nursing Home refurbishment
- Great Ocean Road Health Apollo Bay refurbishment
- Barwon Women's and Children's

South East Victoria

- **New hospital in West Gippsland (Budget 23/24)**
- **Wonthaggi Hospital redevelopment (Budget 23/24)**
- **Maffra District Hospital aged care upgrade (Budget 23/24)**
- New ambulance branches for Morwell, Foster, Yarram & Paynesville
- Phillip Island Community Hospital
- Wonthaggi Hospital Community Rehabilitation Centre expansion

State-wide projects

- Pet scanners across eight health services (Budget 23/24)
- Regional Health Infrastructure Fund
- Engineering Infrastructure Replacement Program
- Medical Equipment Replacement Fund
- Mental Health Capital Renewal Fund
- Acute mental health beds expansion program
- Regional YPARCs

*non exhaustive list of all projects

Largest hospital project in Australia's history

As part of government's investment of \$5-6 billion, an initial \$2.3 billion investment will start work on the Royal Melbourne Hospital and the Royal Women's Hospital redevelopment.

- This landmark project will be delivered over 12 years and includes construction of a new Arden medical precinct – giving patients from right across Victoria the very best of care.
- The initial investment will fund the first stage of works, delivering the first hospital tower in the Arden precinct – creating more than 400 beds.
- The entire project will deliver more than 1,800 beds and treatment spaces.



Arden and
Parkville
redevelopments

Regional Health Infrastructure Fund

Established in 2016, the \$790 million fund is the largest program of its type in Victoria, with over 630 projects delivered to date.

- Last year's State Budget invested \$300 million over four years to provide health service grants for targeted upgrades, tailoring projects to the needs of their local communities.
- The program continues to deliver a variety of projects including operating theatre refurbishments, expansion projects and equipment upgrades.
- This critical fund has delivered hundreds of projects, including a \$8.7 million redevelopment at Ararat Hospital to expand the hospital's theatre, radiology and pathology services.



Ararat Hospital RHIF upgrade

Metro Health Infrastructure Fund

Established in 2020, the fund provides infrastructure grants to city and suburban health services and agencies across Melbourne.

- MHIF is valued at \$265 million, following a \$40 million boost in the State Budget 23-24.
- The fund had delivered 72 projects to health services and agencies across Melbourne to upgrade essential equipment and renew, reconfigure and refurbish infrastructure.
- This includes recent completion of a \$5.2 million upgrade to Melbourne Health's pathology services.



Melbourne Health upgrades

State Budget 23-24 funding overview

This year's Budget is investing \$659 million in building new and upgrading existing health infrastructure across Victoria, including:

- \$320 million to commence planning and development for seven new hospital upgrades
- \$162.2 million to modernise and upgrade public sector residential aged care services
- \$53.196 million to commence planning Stage 3 of the Thomas Embling Hospital redevelopment



Wonthaggi Hospital Redevelopment

Building and upgrading Victoria's hospitals

A new \$320 million Hospital Infrastructure Delivery Fund to commence planning of seven key projects across the state:

- A new hospital and public sector residential aged care facility for West Gippsland to put patients first
- A new Queen Elizabeth II Hospital in Melbourne's East
- Expanding the emergency department for Austin Hospital
- A new emergency department for the Northern Hospital
- A bigger and better Monash Medical Centre
- Upgrading Dandenong Hospital
- Redeveloping Wonthaggi Hospital



Monash Medical Centre & Children's Hospital

Investment to support local communities & health services

More than \$74 million investment to support local communities and health services

- \$44 million to deliver eight more PET Scanners across Victoria, including four in regional hospitals
- \$30.4 million for a new ambulance station at Armstrong Creek



Boosting public sector residential aged care

\$162.2 million to modernise and renew public sector residential aged care services facilities to replace existing capacity in regional Victoria.

- \$38.2 million for a 24-bed co-located facility at Cohuna District Hospital
- \$69.7 million for a 30-bed facility at Maffra District Hospital campus
- \$54.3 million for a 36-bed facility at Numurkah Hospital campus



New Kingston Centre artist impression (in delivery)

Mental health investment

More than \$63 million to continue implementation of key recommendations from the Royal Commission into Victoria's Mental Health System.

- \$53.196 million investment to commence Stage 3 of the Thomas Embling Hospital redevelopment
- \$10 million for the Mental Health Capital Renewal Fund



Thank you.

