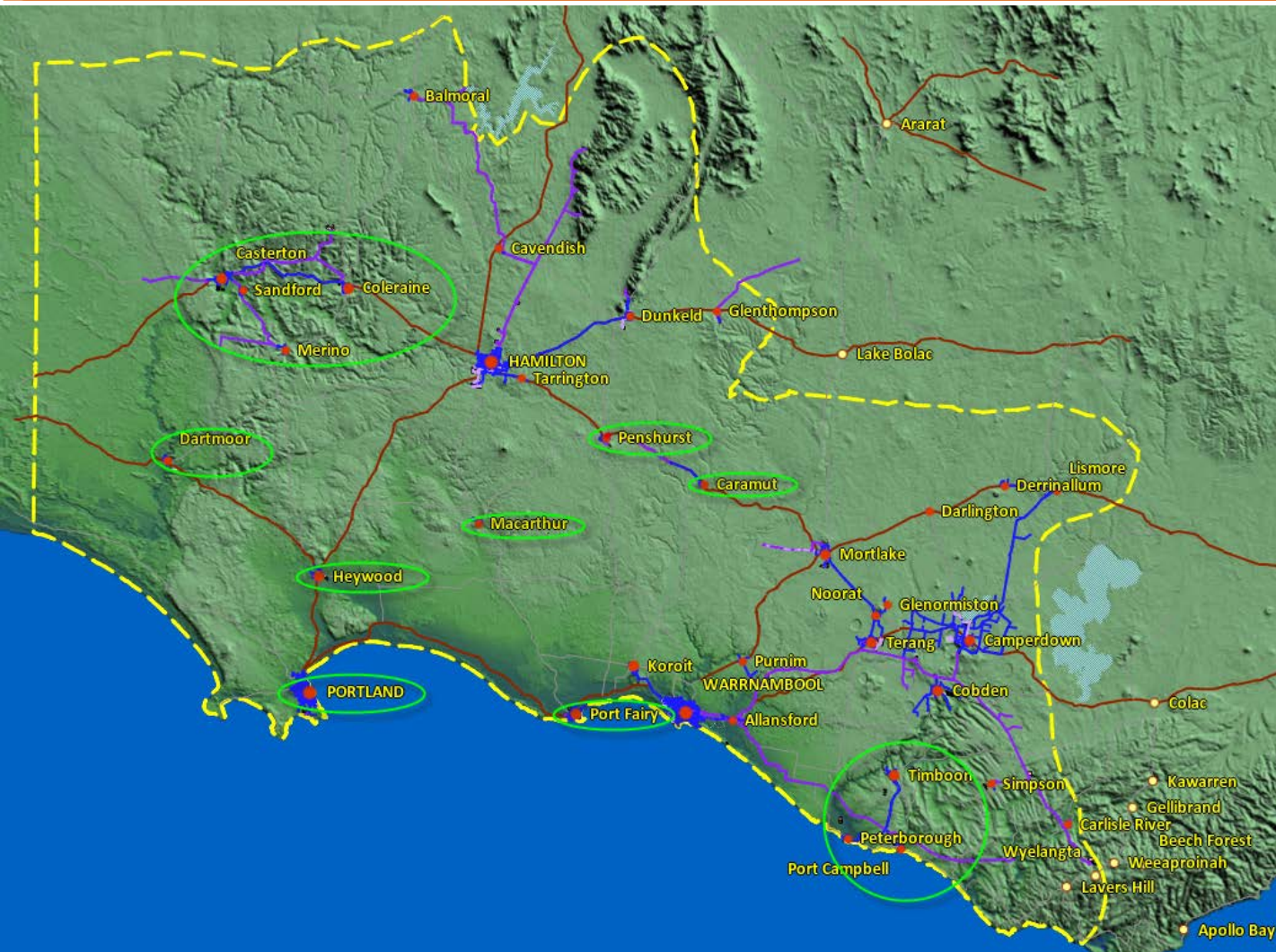


Inquiry into Onshore Unconventional Gas in Victoria

Peter Wilson – Branch Manager Asset Planning

23 September 2015

Our Region



Population
Served 83,000

Service milk
processing plants
– large export
market.

Towns circled
green – 100%
reliance on
groundwater

Figure 1

Declared Surface Water Catchments



Figure 2

Lower Tertiary Aquifer

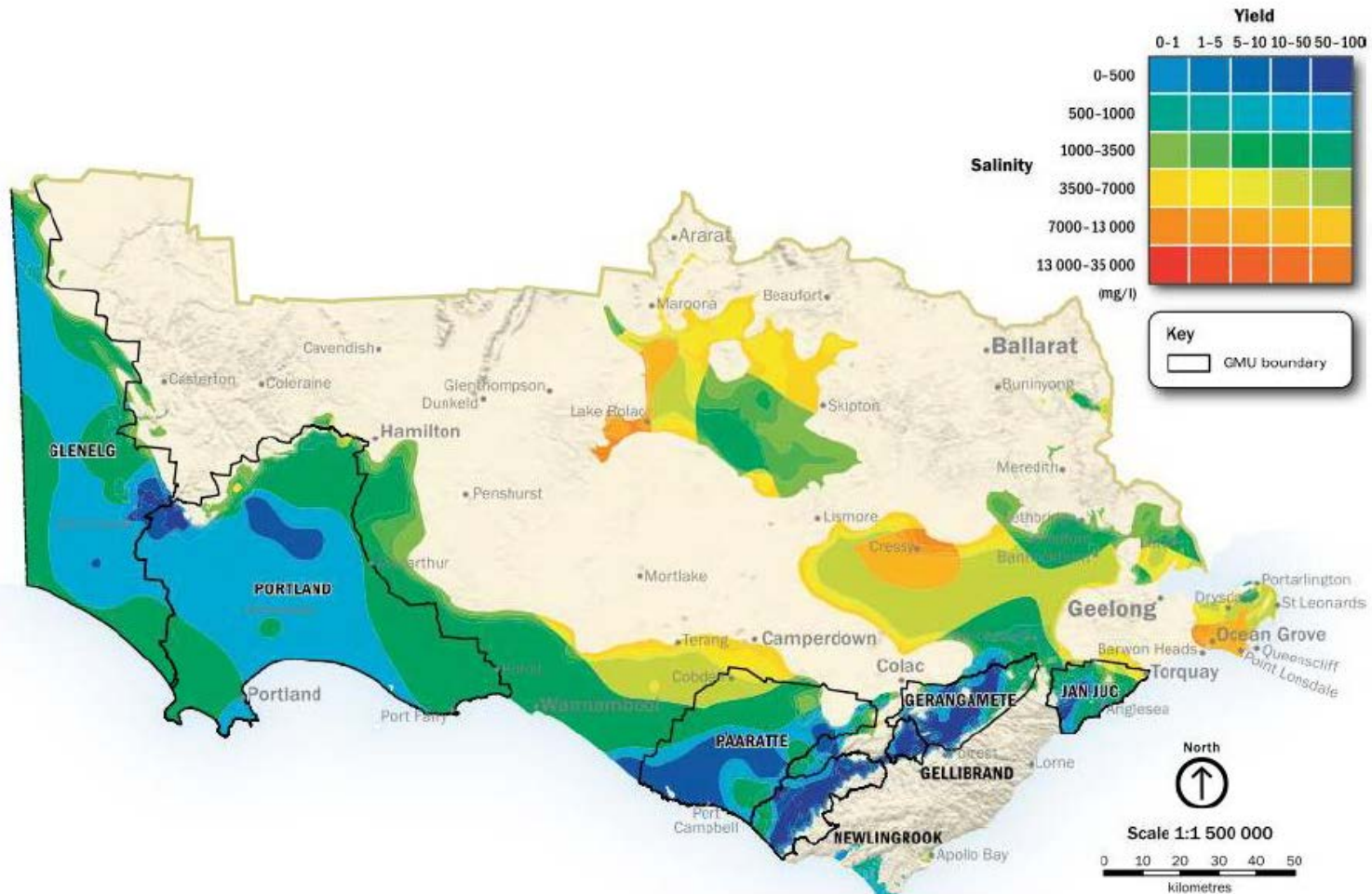
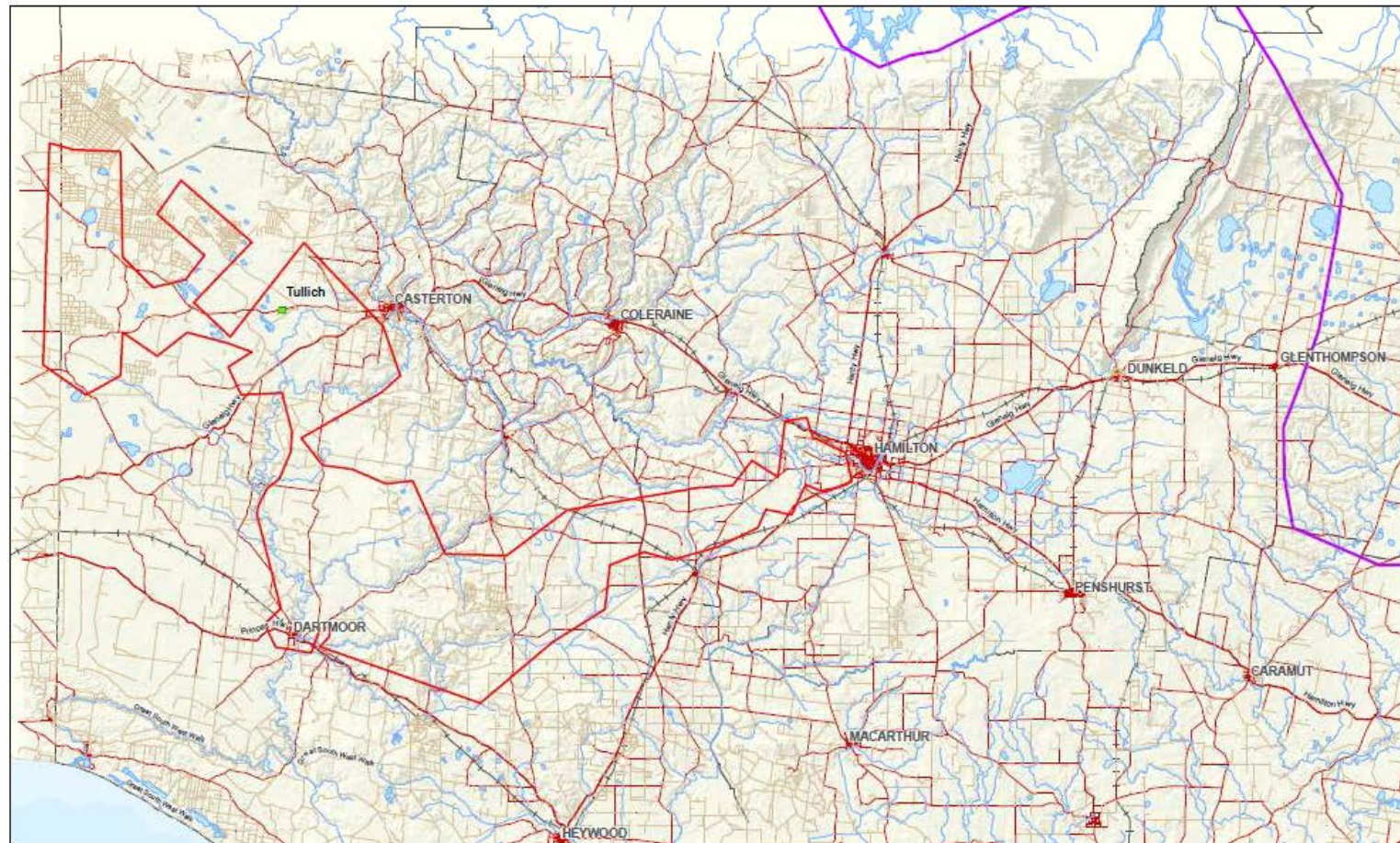


Figure 18: Groundwater salinity and yield map of the LTA. (Source: SRW, 2013.)

Figure 3

Lower Tertiary Aquifer Recharge Area



1:400,000 (at A3)
Kilometers
0 5 10 20
Map Projection: Transverse Mercator
Incorporated Datum: GDA 1984

LEGEND
- Its Recharge Zones
- Extent of Wannon region
- Highway
- Sealed road (arterial & local)
- Unsealed road
- Major water course

GHD
GEOGRAPHICAL HAZARD DESIGN

wannonwater
WANNON WATER

Wannon Water
Groundwater Resource Appraisal
Recommended Areas
for Groundwater Protection:

Job Number 31-27023
Revision 0
Date 20 Jun 2013

Figure 4

Tight Gas

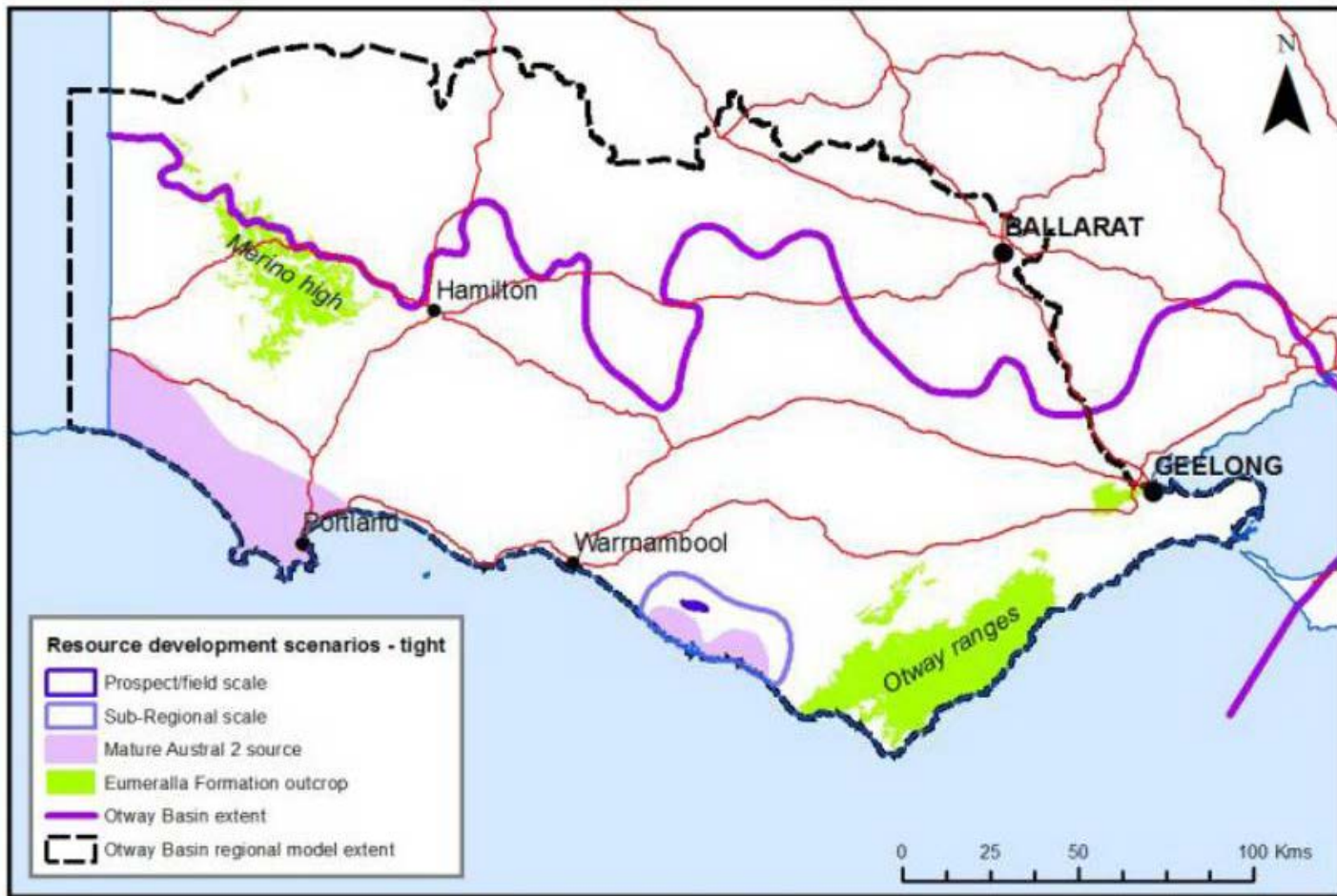


Figure 11: Otway region tight gas resource development scenario area. (Source: Goldie Divko, 2015.)

Shale Gas

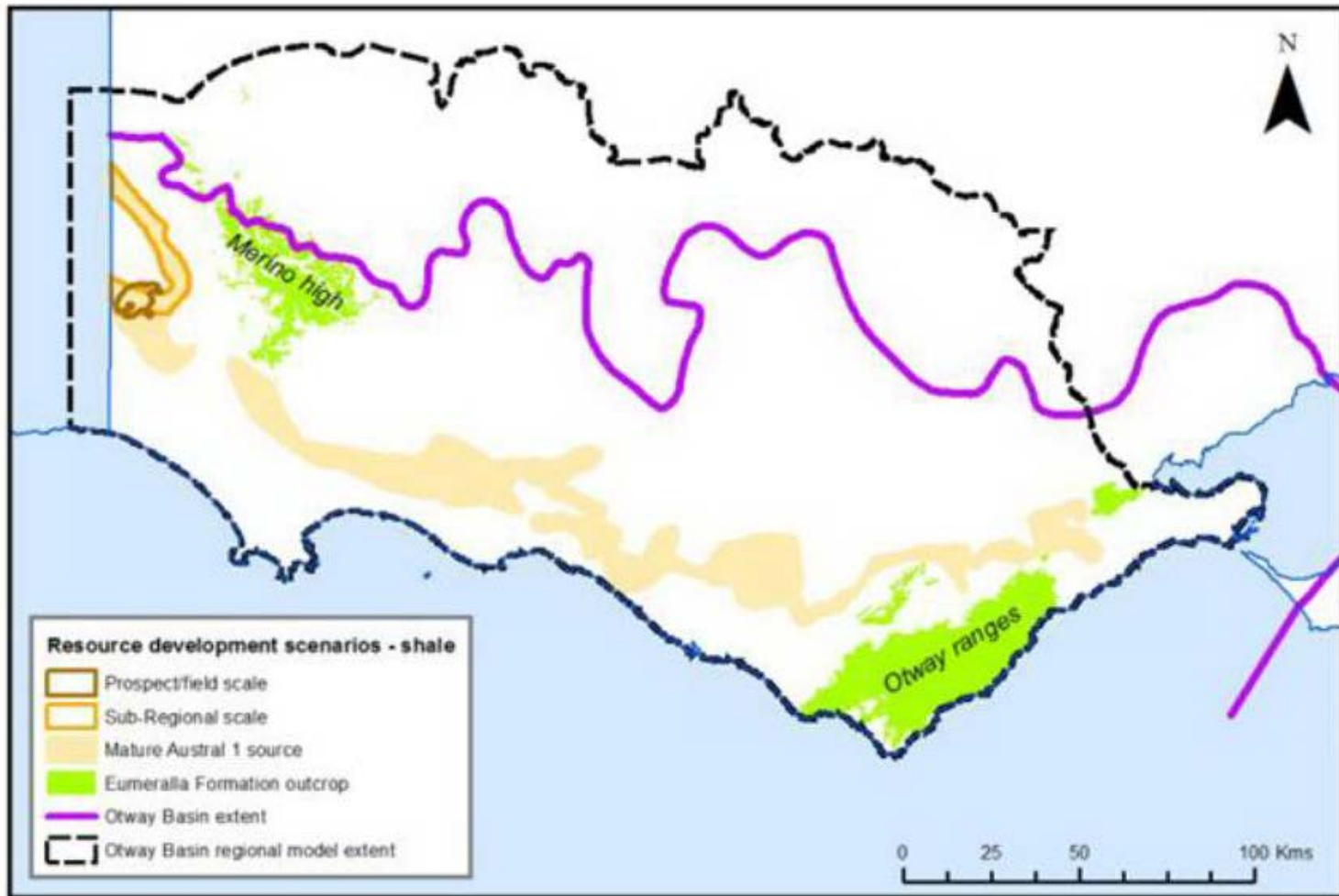


Figure 12: Otway region shale gas resource development scenario area. (Source: Goldie Divko, 2015.)

Coal Seam Gas

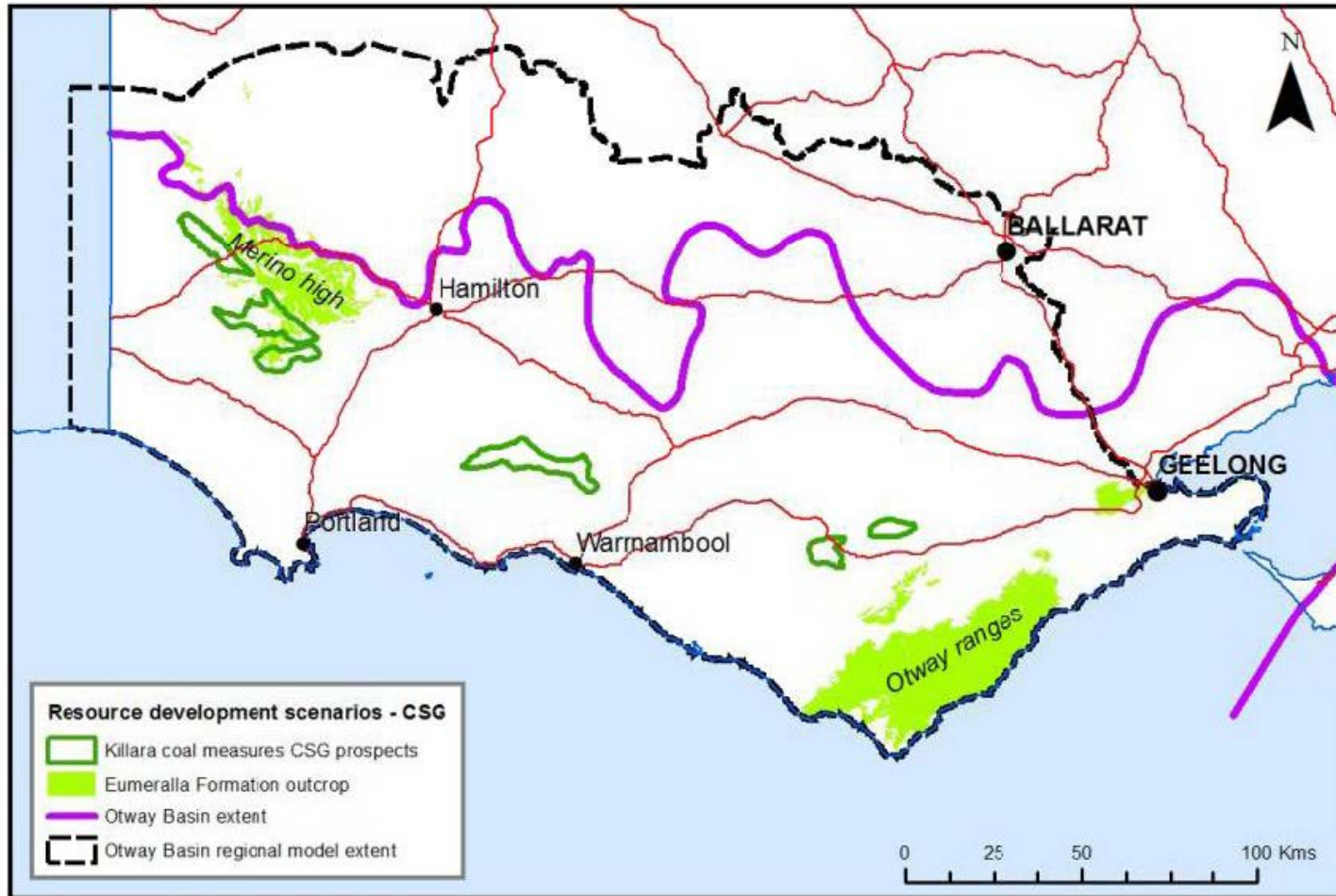


Figure 13: Otway region coal seam gas resource development scenario area. (Source: Goldie Divko, 2015.)

Conventional Gas

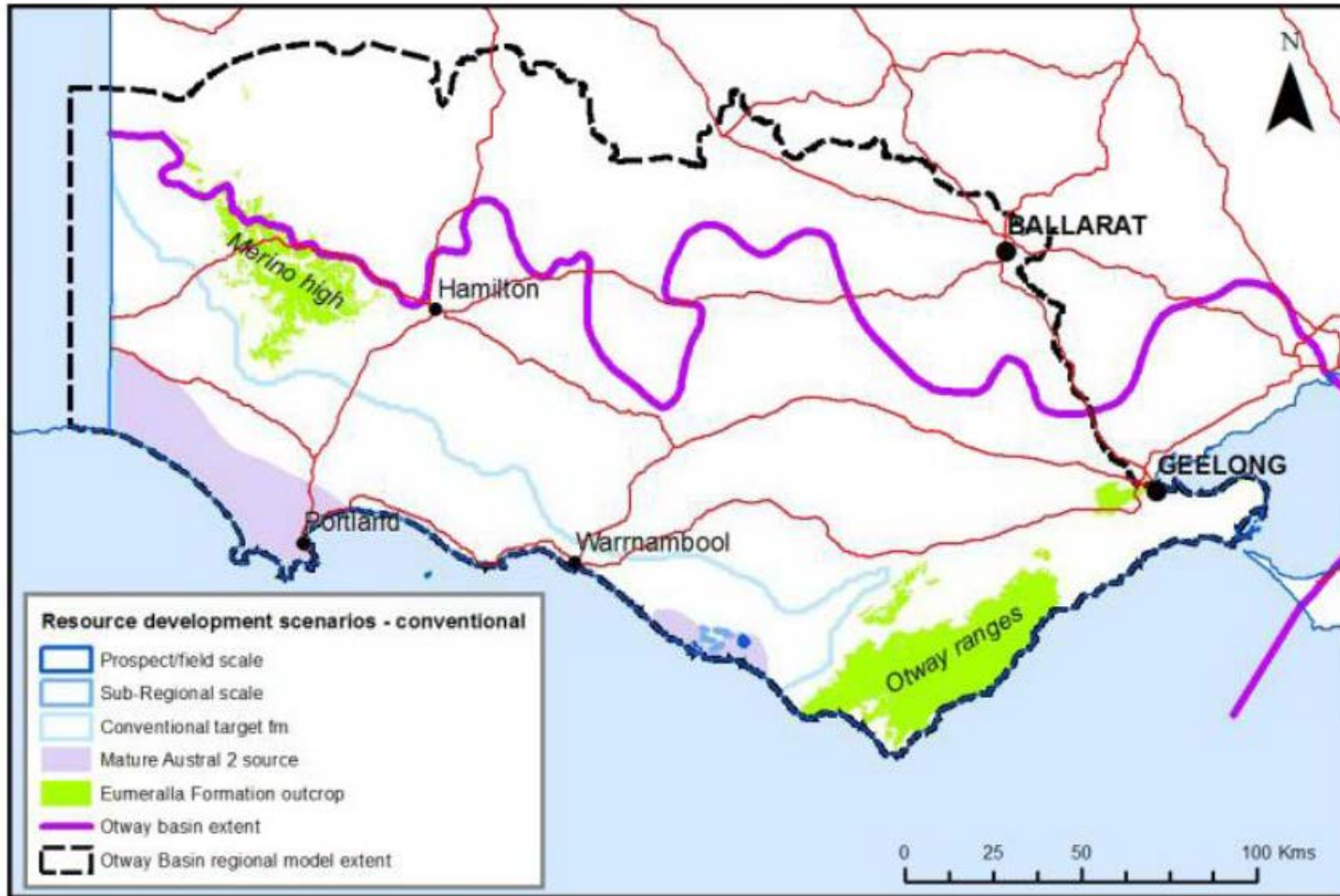


Figure 14: Otway region conventional gas resource development scenario area.
(Source: Goldie-Divko, 2015.)

Lower Tertiary Aquifer Section

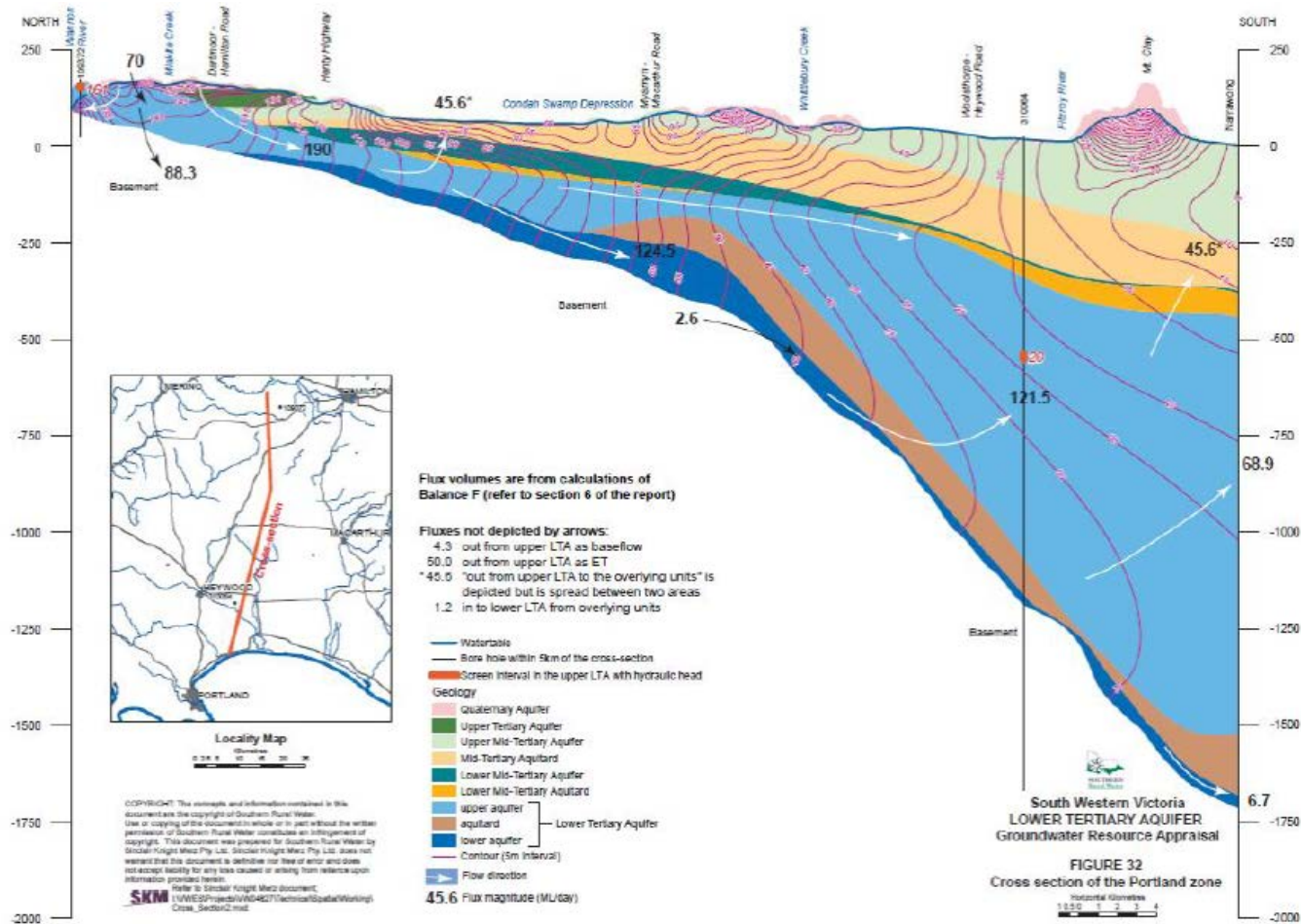


Figure 26: Hydrostratigraphic cross section of the Tyrendarra Sub-basin. (Source: SKM, 2010.)

Figure 5