

How people with disability access TAFE

Parliament of Victoria



Easy English

Hard words



This book has some hard words.

The first time we write a hard word

- the word is in **blue**
- we write what the hard word means.

You can get help with this book



You can get someone to help you

- read this book
- know what this book is about
- find more information.



About this book



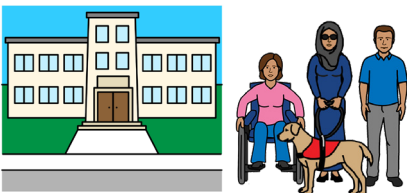
This book is from a
Parliament of Victoria **committee**.



A committee is a group of people who
investigate something.



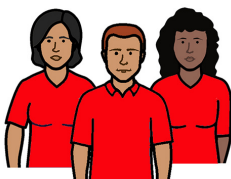
Investigate means we find out what
is happening.



This book is about an investigation into how
people with disability access **TAFE**.

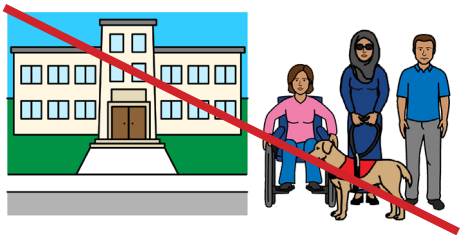


TAFE is where people learn new skills.
For example, job skills.



The Department of Education and Training or
DET looks after how TAFEs run in Victoria.

Why we investigated



We wanted to know

- why some people with disability do **not** go to TAFE

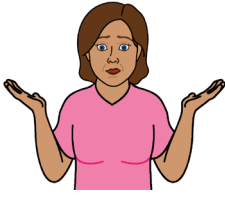


- what makes it hard for people with disability to learn at TAFE

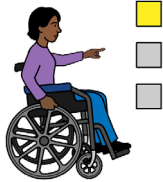


- how to make it easier for people with disability to go to TAFE.

What we found



We found some people with disability do **not** get help to



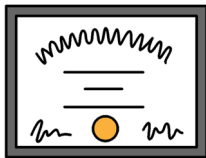
- understand their choices after school



- apply to go to TAFE

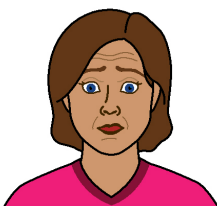


- learn at TAFE

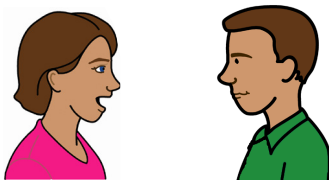


- finish their TAFE course.

We found some people with disability feel scared to



- tell TAFE staff about their disability

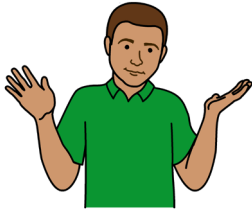


- ask for help at TAFE.



We also found

- some TAFEs could give more help to people with disability



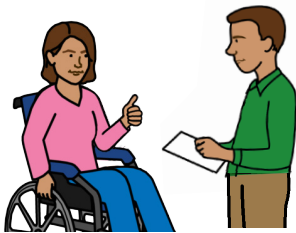
- some TAFE teachers do **not** know how to help people with disability.

What we think

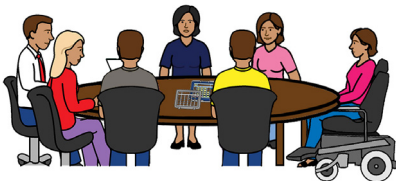


We think TAFEs should

- have staff to help people with disability move from school to TAFE



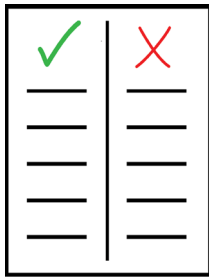
- make it easy for people with disability to get help



- give people with disability more help to learn

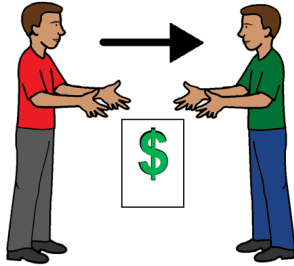


- train staff to help people with disability.

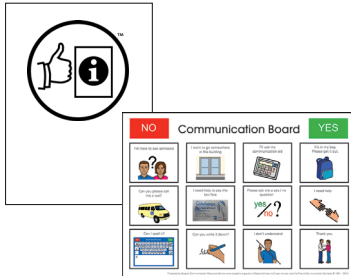


We think DET should

- make clear rules about how TAFEs should help people with disability



- give extra payments to TAFEs that help people with disability

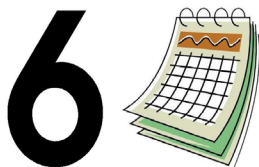


- get TAFEs to share resources for people with disability
 - for example, information or communication aids.

What will happen next?



We gave our report to DET.



DET has 6 months to tell us what they will do.

More information



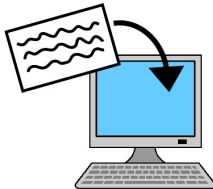
For more information contact the
Legislative Assembly Economy and
Infrastructure Committee,
Parliament of Victoria.



Call 03 8682 2822



Website parliament.vic.gov.au/eic-la



Email

TAFEaccessinquiry@parliament.vic.gov.au



If you need help to speak or listen use the National Relay Service.

Call 1800 555 660



Website

communications.gov.au/accesshub/nrs



Give the relay officer the phone number you want to call.

This Easy English document was created by Scope (Aust) Ltd. in August, 2021 using Picture Communication Symbols ©1981–2021 by Tobii Dynavox. All Rights Reserved Worldwide. Used with permission. Boardmaker® is a trademark of Tobii Dynavox. This document must not be sold to third parties. The images must not be reused without permission. For more information about the images, contact Scope on 1300 472 673 or visit scopeaust.org.au