

The Peter Doherty Institute for Infection and Immunity and COVID-19

Professor Sharon R Lewin AO, FRACP, PhD, FAAHMS

Director, Doherty Institute

Professor of Infectious Diseases, Melbourne Medical School, University
of Melbourne

Consultant physician, Department of Infectious Diseases, Alfred
Hospital and Victorian Infectious Diseases Service, Royal Melbourne
Hospital



A Short History



An unincorporated joint venture between The University of Melbourne and The Royal Melbourne Hospital



Deep expertise in virology including specialised level 3 and 4 high containment laboratories



Entirely focused on infection and immunity



\$210 Million building – State, Commonwealth and University Funding



Over 700 scientists, educators, clinicians and public health experts



Institute opened Sept 2014

A unique institute for Australia





Victorian Infectious Diseases Reference Laboratory



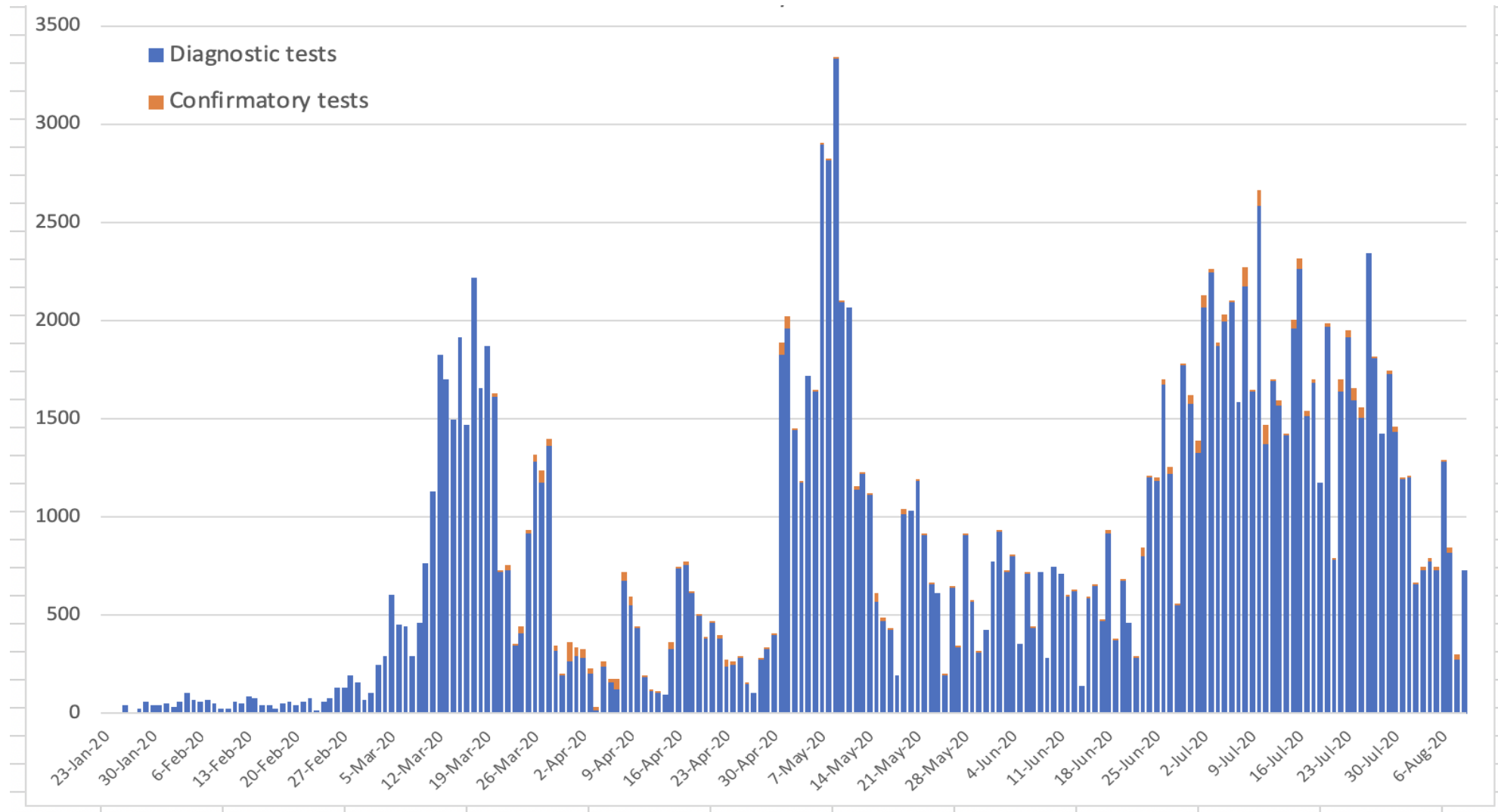
Microbiological Diagnostic Unit Public Health Laboratory



Royal Melbourne Hospital Microbiology

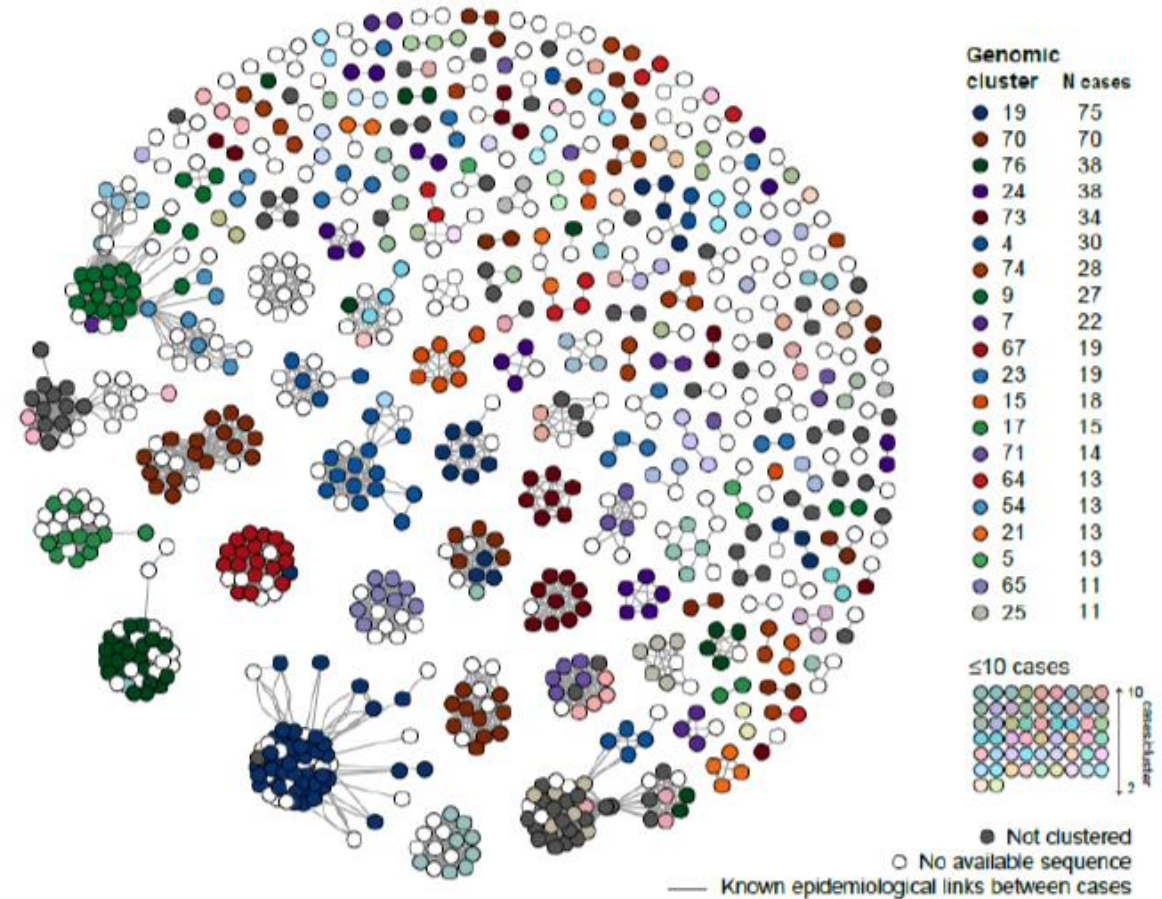


COVID-19 testing @ Doherty Institute



221,000 tests performed demonstrating significant surge capacity and reference function for confirmation

COVID-19 genomics @ Doherty Institute



Related clusters of COVID-19 infections in Victoria's first wave

COVID19 related discoveries @ Doherty

- First to isolate and share the virus outside of China
- Developed mathematical models to inform Australian and Victorian Government response
- Developed new diagnostic tests including use of saliva and rapid tests
- Leading the largest national trial of antivirals for hospitalised patients (ASCOT)
- Four vaccines candidates and COVID-specific antibodies in pre-clinical development





Planning for the future

- Pandemic preparedness needs significant investment in “peace time”: people, infrastructure and partnerships
- Research needs to be embedded in and working in partnership with the public health response
- Improved national co-ordination in infectious disease research is needed to support our federated public health system
- Victoria is well placed to play a major national leadership role in pandemic response now and in the future

With thanks

Doherty.edu.au

 /DohertyInstitute

 @TheDohertyInst #DohertyInstitute

 @dohertyinstitute



A joint venture between The University of Melbourne and The Royal Melbourne Hospital

