



2015/16 Regional Pre-Season Briefing

Working in conjunction with Communities,
Government, Agencies and Business.

Briefing Purpose

To brief Level 3 Incident Management Team (IMT) and senior leadership personnel on key issues and information relevant to the upcoming 2015-16 summer operational period.

Introduction Video - EMC message



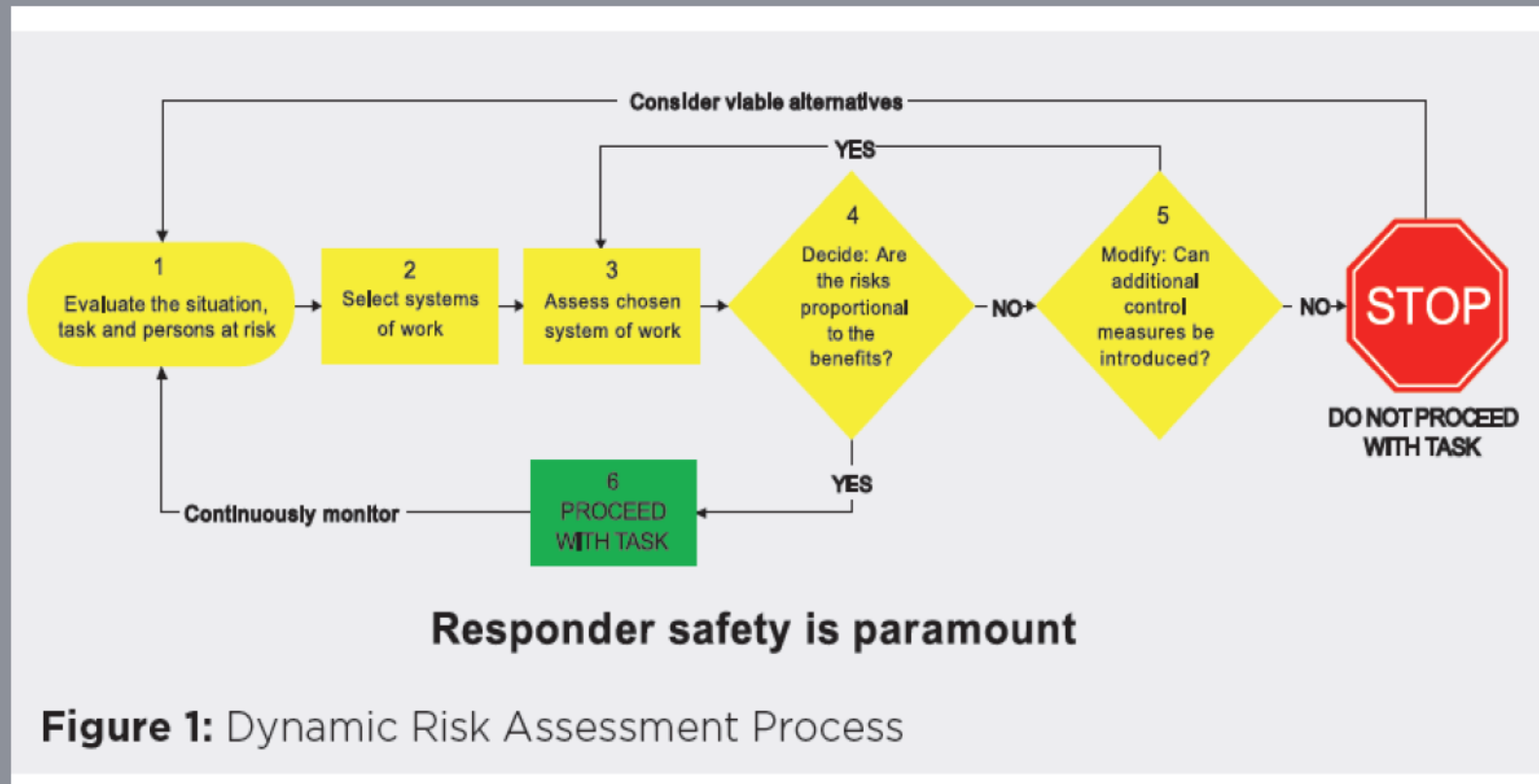
Working in conjunction with Communities,
Government, Agencies and Business.



Safety

- Promote the use of Dynamic Risk Assessment (DRA) and Tree Hazard Safety on the fireground.
- Ensure the use of salmon cards and report incidents promptly.
- Communicate safety messages across all levels and promote general health and fitness. Include strategies which will reduce regularly occurring injuries like sprains and strains, dehydration and heat illness.
- Document and communicate safety risks and controls.
- Manage fatigue to reduce risk.
- Remember driving vehicles and operating machinery are always a high risk.
- Allocate a team to manage serious OHS incidents.

Safety - Dynamic Risk Assessment (DRA)



Safety - Tree Hazard

- Revised JSOP J08.03 Tree Hazard - Bushfire Response
- eMap Layer - areas of Tree Hazard
- Suppression Strategies
- Strategic Road Network

INITIAL ATTACK
K TREES MUST BE IDENTIFIED CONTINUOUSLY USING DYNAMIC RISK ASSESSMENT

IDENTIFY then EXCLUDE or REMOVE

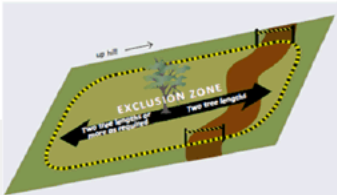
✓ All crews can and should identify K trees as part of DRA

K trees

- Extinguish trees to prevent becoming hazardous where safe to do so
- Once K trees are identified crews must be isolated from the hazard to the establishment of an exclusion zone or other method (eg. close road)
- Use of appropriate machinery is the preferred safest option for trees
- Accredited Fallers are the next safest option (Intermediate or Advanced)

"K" symbol

- ✓ 30cm+ symbol
- ✓ Marked 2 sides of tree
- ✓ 1.5m off ground
- ✓ Clearly visible from control line
- ✓ Assess on foot



BEFORE MOP UP
K TREES MUST BE ASSESSED ON FOOT THOROUGHLY & METHODICALLY

IDENTIFY then EXCLUDE or REMOVE

HOW FAR? Mop up depth plus 1 tree length, extend to mop up depth plus 2 full tree lengths when trees may slide or create a domino effect

- Principles are the same as for Initial Attack PLUS
- Addition of mop up area
- Assessment to be carried out on foot in a thorough and methodical manner

✓ Only Qualified or Experienced persons can carry out K tree assessments once initial attack phase of response is completed.

"Exclusion zones"

- ✓ Clearly marked
- ✓ block access
- ✓ Ensure responder safety
- ✓ Use correct tape
- ✓ Remove if no longer a hazard


Look up, down & around
What's your tree hazard?



Do you know:

- the new bushfire tree hazard JSOP 8.03
- the new tree hazard classes
- the marking system
- what an exclusion zone is ?

Go to: www.emv.vic.gov.au/treehazard



Working in conjunction with Communities,
 Government, Agencies and Business.



Seasonal Outlook: Sept – Nov 2015

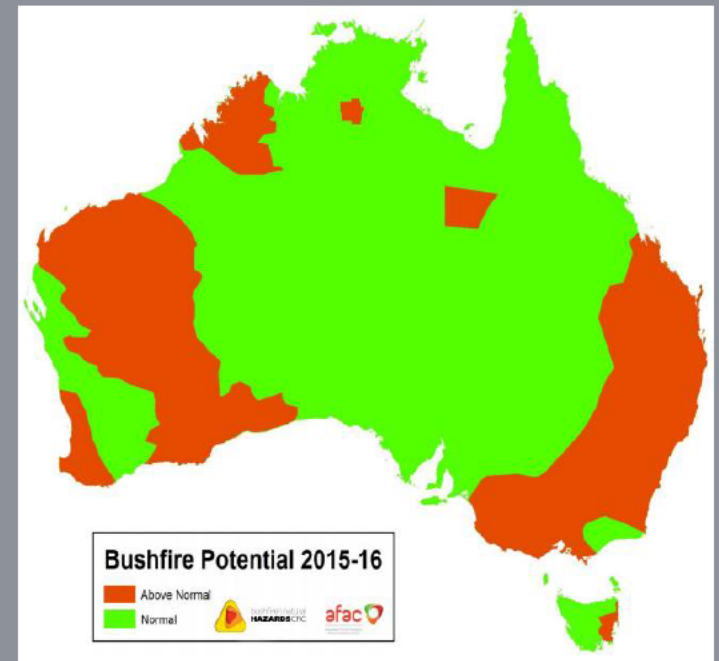


Working in conjunction with Communities,
Government, Agencies and Business.



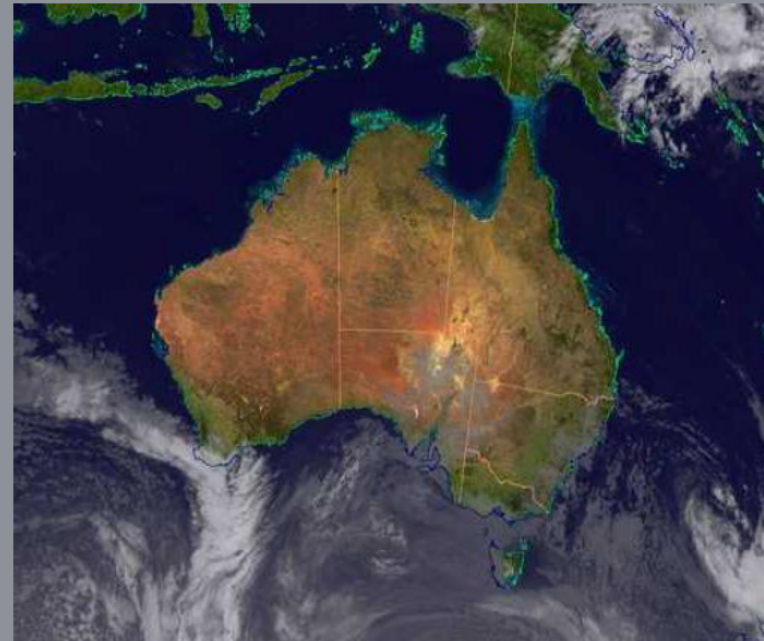
Bushfire Outlook 2015-16

- The Seasonal Bushfire Outlook for southern Australia.
- A preliminary investigation of factors affecting the fire season outlook for 2015-16 point to an **above normal season** across most of Victoria.
- Strong likelihood the season will begin early.
- Factors affecting grass growth and curing are not yet clear.
- Given the long-term rainfall deficits, significant rain would be required over the spring period to alter the outlook for an **above normal fire potential for most of Victoria.**



BOM Weather Products

- SCC weather briefings
- Daily weather teleconferences
- Observations
- MetEye
- Spot Forecasts
- Forecaster contact during operations



Doctrine

What's New

- Foundations of Emergency Management (Class 1 emergencies)
- Fundamentals of Emergency Management (Class 1 emergencies)
- Guidelines
- JSOPs

Location

- EMV website
 - our work > managing emergencies
 - procedures > incident management
- EM Portal
 - EMK > Doctrine > welcome to doctrine
 - EMK > Doctrine > IMT toolbox
 - EMK > Doctrine > JSOPs

JSOPs - Changes

- **SOP J03.09 - Resource Request Process**
 - Minor editorial and Machinery of Government (MoG) changes
- **SOP J03.14 - Control of Class 1 Emergencies**
 - Minor editorial, formatting, MoG and relief and recovery changes
- **SOP J03.15 - Transfer of Control and IMT relocation**
 - Minor editorial, formatting and MoG changes
- **SOP J03.16 - Significant Event Notification**
 - No change, reissued
- **SOP J03.17 - Regional Strategic Plan**
 - Minor editorial, formatting, MoG changes, with the consequence and recovery components of planning included.

JSOPs - Changes

- **SOP J08.03 - Tree Hazard**
 - **Amendment of wording (IC responsibilities)**
 - was “assess” changed to “consider” – IC to ensure tree hazard is considered on access/ egress routes
 - **Revised tree length requirement**
 - generally 2 tree lengths, but conditional on site factors
 - **Clarification of who can fall hazard trees**
 - Advanced or intermediate faller
 - **Amendment of Qualification Requirement**
 - forestry fallers with no fire experience to have fire safety competency, or be accompanied by personnel with this competency.

JSOPs - Pending Updates

- **SOP J02.03 - IMT Readiness**
 - Linkage to ICC Management Arrangements
 - Changes to ICC footprint boundaries (Schedule 1)
 - Inclusion of reference to Intelligence Officer as specialist role (schedule 3)
 - IMT readiness ICC levels (schedule 4)
 - Changes for Loddon Mallee, Hume and Gippsland.
- **SOP J02.06 - Readiness Arrangements - aviation resources**
 - To be reviewed by state aviation team

Intelligence Function: Summer 15/16

- The Intelligence function undertakes the task of collecting and analysing data and information to support decision making and planning.
- The Intelligence Function will begin to be introduced this summer in incident management. It will not be in place for all incidents.
- The decision on when an Intelligence Section is in place will be made by the Regional Controller and Incident Controller. It will generally only apply to more complex incidents (level 3)
- There are a limited number of trained Intelligence Officers. They will be strategically allocated to support incident management.

Intelligence Function: Summer 15/16

- When an Incident Controller chooses to establish an Intelligence function in an IMT it will bring together specialist personnel such as Mapping and Fire Behaviour Analysts into an Intelligence Section as per AIIMS 4.

Readiness

- Intelligence Officer at the Region – discretion of RC to deploy.
- Code Red – full IMT to include an Intel Officer to lead the Intelligence Section.
- Below Code Red – at the discretion of the RC to allocate an Intelligence Officer to an IMT.

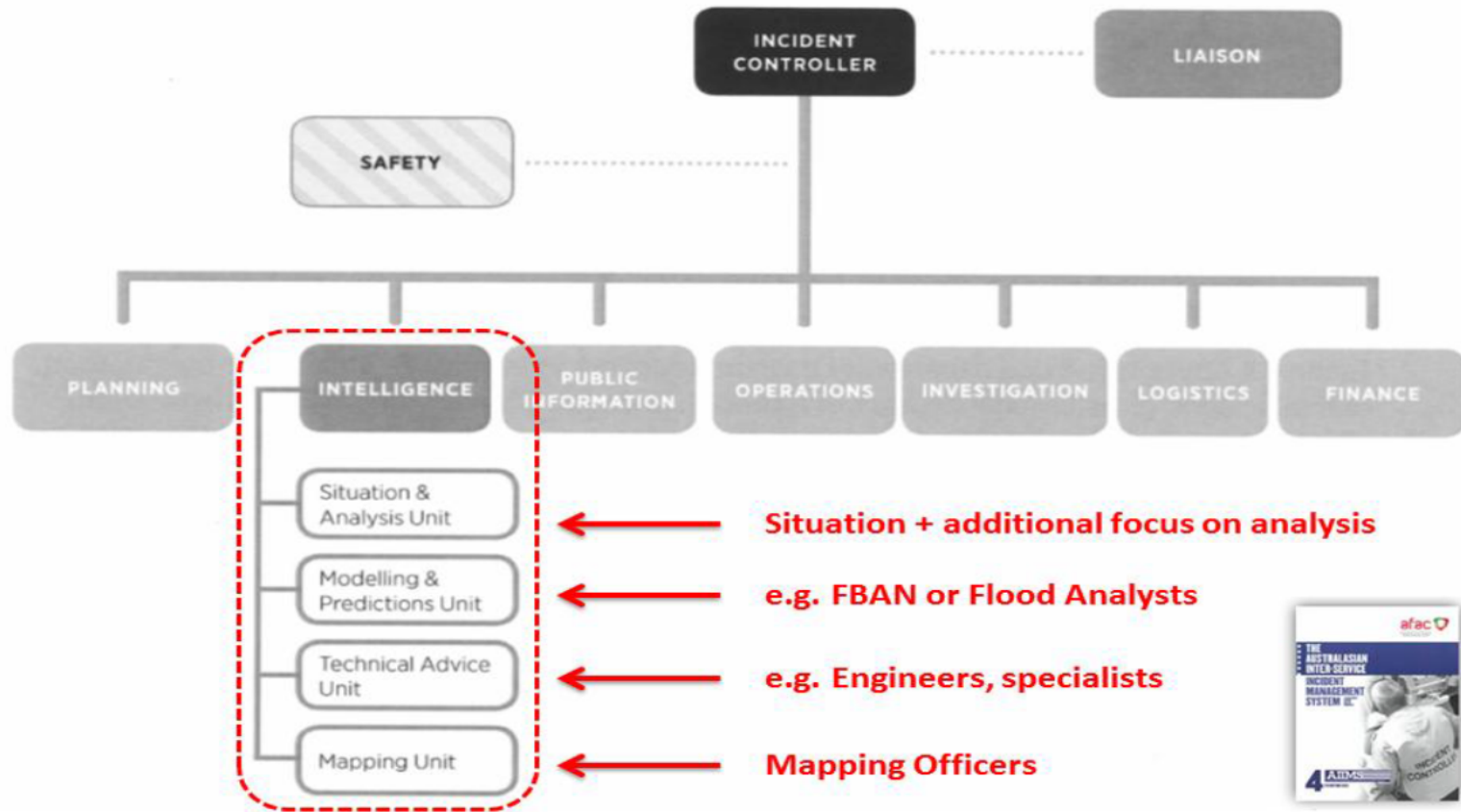
Intelligence Function: Summer 15/16

Response

- Intelligence Officer will lead an Intelligence Section (not an Intelligence Unit within the Planning Section).
- Intelligence Section will be as per AIIMS 4
 - includes Situation and Analysis, Modelling and Prediction, Mapping, Tech Specialists.
- Plans Unit in Planning Section. This will involve IC reallocating tasks from current AIIMS 3 structure.

Intelligence Function: Summer 15/16

Intelligence as a SECTION



Working in conjunction with Communities,
Government, Agencies and Business.

EMPortal - <http://portal.em.vic.gov.au/>

EMPortal - progressive upgrades throughout Aug - Sept 2015

- **The main changes include:**
 - User registration process for EMPortal | EM-COP
 - Improve data security for sensitive information
 - Plain language menu structure e.g. Desktop | Regions | SCC | SCT
- **Regional portal pages, which will include:**
 - Shared Calendar
 - Contact Books
 - News
 - Plans ,etc.

EM-COP Summer 15/16

- Emergency Management – Common Operating Picture (EM-COP)
- Will be used by RCT/REMTs and SCT/SEMT/SCC
- RCT will use for regional sit reps and briefings (e.g. Daily RC teleconference)
- Roll out to incident level will align with IMT Intel Officer training/accreditation throughout 2015-16.
- Basic training delivered via WebEx and briefings
- EM-COP Training Site: <http://training.cop.em.vic.gov.au/>
- EM-COP Incident Site: <http://cop.em.voc.gov.au/>
- FAQ's available on EMPortal | Guides and References

VicEmergency Website (new)

- **Current www.emergency.vic.gov.au is being rebuilt, with new website being developed in three stages:**
 - Like for like replacement of current VicEmergency site - Oct 2015
 - Major incident pages - November
 - Introduction of Watch Zones - January
- **Community testing overlays the whole project - testing for each of the three stages.**
- **New website will be quicker, easier to use and work across all devices - desktop, mobile and tablet.**

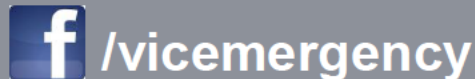
Warnings Platform - all hazards (new)

Currently being built - integrated with EM-COP

- **Timelines and key outcomes:**
 - Sept to Dec 2015 - Development of new platform
 - First Quarter 2016 - Training Roll Out
 - July 2016 - Platform Transition
- **OSOM and VICSES OSOM** - will remain as the warnings publishing tool for all fire, hazmat and SES related incidents during summer 15/16.
- **Emergency Alert (EA) use** - unchanged for summer 15/16.
- **Warnings and Advice Officers and Public Information Officers should practice their skills in both OSOM and EA education environments before the start of the season.**

Social Media Focus

- Social media before, during and after emergencies - Increasing operational staff awareness and education.
- Investigating how social media can be embedded in ICC's during incidents - pilot to deploy SCC Social Media Officers to work in ICC's.
- Social media training, cheat sheets and support for regionally based public information staff.
- New VicEmergency social media channels - all hazards, all agencies info.



Logistics

- Key change to incident catering - Red Cross will no longer provide catering services to response agencies.
- Red Cross will continue to provide emergency food and water to affected communities (including emergency relief centres).
- The control agency is responsible for sourcing, supplying and funding catering for all agencies responding to a local incident.
- DELWP has state-wide contracts available for catering at a campaign level.
- Ensure you are aware of any new local arrangements in your Region.
- Base camp capability: 24 - 72 hours to establish based on size and location. Up to 3 camps to support 200 - 300 personnel.

Aviation Update

Aircraft Fleet for summer 2015/2016

- Fleet will be similar to last year with some upgraded helicopters expected
- Additional Medium Helitak at Mangalore (PDD)
- Awaiting finalisation of the Type 2 and Type 3 contracts
- LATs (Large Air Tankers) returning for the summer season

JSOP 2.06

- No significant changes anticipated.
- AIG Readiness may change slightly

IAOP (Interagency Aviation Operation Procedures)

- SAUPs reviewed and are now IAOPs

Once dispatched, re-tasking of all aircraft MUST be via State Airdesk



Managing Multiple Emergencies

- IMTs required to manage multiple emergencies within ICC footprints.
- This may involve incidents of the same hazard type or in some cases adopting an all-hazard management approach.
- Key to successful management of multiple incidents is good preparation. Pre-developed relationships are part of this success.
- Communication is vital - clear control and command structures assist with informative, clear and concise communication.
- Develop and maintain a high level of situational awareness to enhance the flexibility needed to respond to multiple incidents.
- Establish and maintain communication between incident and region control tiers to ensure effective resource management.

Critical Infrastructure

- New arrangements (aimed at building resilience) commenced operation on 1 July 2015.
- Include a new model for Victoria and transfer of responsibility to the Minister for Emergency Services and EMV.
- Critical Infrastructure has a new definition moving from a sole focus of terrorism to a new “all hazards” model (including terrorism).
- Critical Infrastructure is now assessed and categorised as either **LOCAL, MAJOR, SIGNIFICANT or VITAL**.
- The **VITAL** category requires owners and/or operators to develop emergency risk management strategies and practices.
- **If operating in an area with Critical Infrastructure, IMTs must access any risk mitigation plans these sites may have, and incorporate the relevant information into IAPs during incidents.**

Smoke Management

- State Smoke Framework - outcome of Hazelwood Mine Fire
- Community Smoke, Air Quality and Health Protocol and the Standard for Managing Exposure to Significant Carbon Monoxide Emissions have been revised and updated.
- Work is underway to implement the new standards and protocols on a staged basis
- The consequence of smoke impact on communities from all fires must be considered and managed at each tier of control.

Traffic Management Points

What has changed

- Chief Commissioner (Victoria Police) instructions, police officer safety and one up patrols.
- Traffic Management Manager (TMM) role unchanged.
- Reinforcement of constant need for assessment and de-activation of TMPs when safe

Areas for continuous improvement

- Communication links between field, TMM, IC and R/C to resolve issues around community impacts resulting from TMPs
- Ensuring timely and accurate updates are given to Vic Roads so Vic Traffic can be updated
- TMM must work in a team

Impact Assessment

- **What is it?**
- **Three stages**
 - Initial Impact Assessment
 - Secondary Impact Assessment
 - Post Emergency Needs Assessment
- **Accountabilities and reporting**
- **Victoria Police role**

Refer EMK for guidelines and associated documents

Victorian Emergency Animal Welfare Plan

- The plan recognises that in emergencies, human safety is impacted by the bonds people have with animals.
- The community and property owners expect access will be granted as a priority following fire, to address urgent animal welfare needs.
- Agencies should be prepared for people to act in the interest of their animals even when it is unsafe, and to put their lives at risk for their animals.

DEDJTR

- Primary agency for animal welfare
- All hazards, all species
- Coordination of all AW agencies
- Animal welfare assessment

DELWP

- Primary agency for wildlife welfare
- Coordination of agencies & volunteers
- Wildlife welfare assessment

Councils

- Animals at evacuation or relief centres
- Stray, wandering and lost animals

Community Engagement

- Connect with affected communities quickly.
- Use people from emergency management agencies/organisations the community know and trust.
- Understand local influences and incorporate these in your engagement strategies.
- Consider both permanent and visiting members of the community especially in tourist areas.

Emergency Management Teams

- Right people representing the right agencies/organisations.
- Engage your local government representatives early.
- Consider other key stakeholders in the wider emergency management sector.
- Use EMTs as a key point of reference for consequence management.
- Emergency Management Team Arrangements 2014

Relief and Recovery Coordination

- State-level relief and recovery coordination (EMV responsible)
- Regional relief and recovery coordination (DHHS responsible)
- Local relief and recovery coordination (Local government responsible)
- DHHS will appoint a Relief and Recovery Coordination Senior Liaison Officer, to be held by Alan Hall. This role will be a strategic and operational interface between regional and state coordination.
- EMV is updating Part 4 and Part 7 of the EMMV to reflect the new arrangements.

Business as Usual

- Integrated Initial Attack
- Private Equipment
- Integration of local knowledge into IMTs
- Fireground rehabilitation and essential water replacement
- IMT Relocation
- Early investigation of fires
- Publications for 2015-16
 - Victorian Bushfire Handbook: Edition 5
 - Pre-Season Update: 2015-16 Summer Season

Regional Issues

- Regions to insert key local issues for briefing

Additional Information on EM-Portal

<http://files.em.vic.gov.au/PreSeasonBriefings/EMV-PreSeason-Menu.htm>

- Managing Smoke and Emissions
- Impact Assessment for Class 1 Emergencies
- Lessons Management
- Emergency Stabilisation Recovery and Essential Water Replacement
- Functional Role - Logistics
- Victoria Police - Operation Firesetter
- Victoria Police - Decision Guidance Tool
- Victoria Police - Operational Response to heatwave
- 2015/16 Pre-Season Update
- DVD - Halls Gap Evacuation
- Public Information
- Relief and Recovery - Regional contacts



Working in conjunction with Communities,
Government, Agencies and Business.

